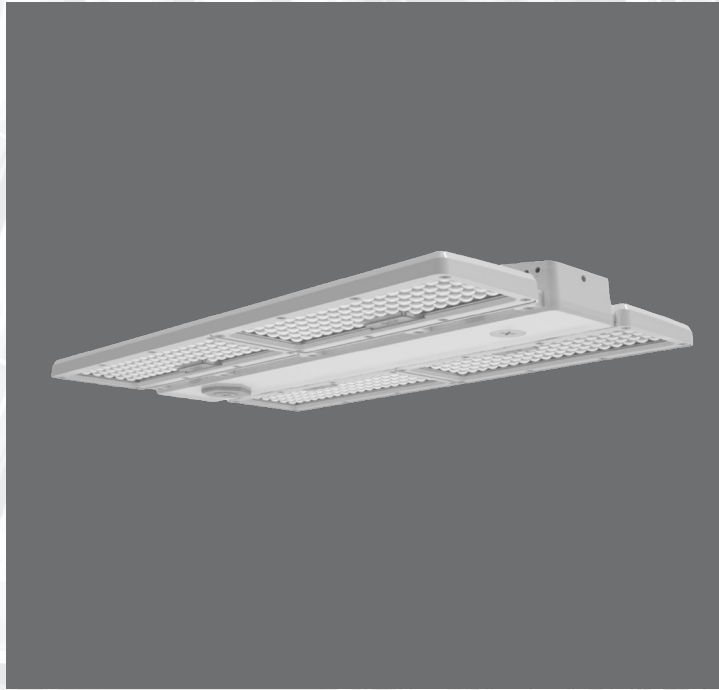




# TRITON Series

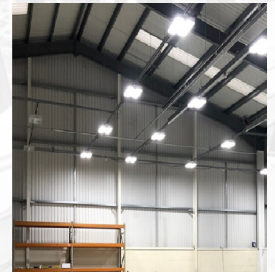
## NSF Sleek Linear Highbay



|      |  |             |  |
|------|--|-------------|--|
| Date |  | Project     |  |
| Type |  | Part Number |  |

ARCHITECTURAL LUMINAIRES BY RENO LIGHTING

Designed for demanding environments, the TRITON NSF Sleek Linear Highbay offers exceptional protection against high water temperatures and pressure, paired with a smooth housing design for easy wash-down maintenance. Its streamlined construction ensures maximum efficiency and delivers superior lighting performance for large spaces. Purpose-built to withstand harsh conditions, the TRITON is the ideal solution for applications in food processing, heavy manufacturing, cold storage, and laboratories.



### Product Features

- NSF /ANSI 2 Certified: Compliant with food protection and sanitation requirements
- IP69K Rated: Ensures complete protection against dust and high-pressure, high-temperature water jets
- NEMA 4X Certified: Ensures the fixture is water-tight and can withstand extreme conditions
- Finish is salt-spray tested to 1,500 hours per ASTM B117
- Includes: 10ft White Cord, jack chain, and v-hooks
- Smooth aluminum housing protects the fixture from the accumulation of substances such as food debris and dust
- Designed for environments where equipment must endure rigorous cleaning and sanitation processes
- Sensor-Ready with 3.5mm jack design, compatible with Standalone and RENO Smart Bluetooth Sensors
- Compatible with the RENO All Weather Emergency LED Driver to provide backup power during a power outage
- Operating temp: -40°F to +122°F (-40°C to +50°C)
- Rated lifetime L70: >100,000 hours
- 10 Year Limited Warranty

### Key Specifications

|                         |   |
|-------------------------|---|
| <b>Voltage</b>          | 120-347V  |
| <b>Wattage</b>          | Selectable: 100/150/200W  |
| <b>CCT</b>              | Selectable: 35/40/5000K   |
| <b>Efficacy</b>         | 150 lm/W  |
| <b>Lumens</b>           | Up to 30,000 lm   |
| <b>CRI</b>              | >80   |
| <b>Power Factor</b>     | >0.9  |
| <b>THD</b>              | <20%  |
| <b>Beam Angle</b>       | 90°   |
| <b>Dimming</b>          | 0-10V Dimming   |
| <b>Surge Protection</b> | 6kVA  |
| <b>Certifications</b>   | NSF/ANSI 2, IP69K, NEMA 4X, ASTM B117, DLC Premium                        |
| <b>Mounting</b>         | Suspended (Included) or Surface (Additional)                              |
| <b>Applications</b>     | Food, Pharmaceutical, Automotive, Agricultural, Marinas, Heavy Industrial |





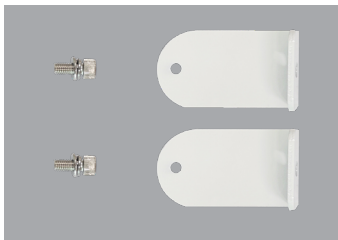
## Specifications

| Order# | Model                     | Wattage | Voltage  | Lumens    | Efficacy | CCT   |
|--------|---------------------------|---------|----------|-----------|----------|-------|
| R34150 | RENO-SLEEK-LHB-DV-MW-MCCT | 100W    | 120-347V | 16,066 lm | 160 lm/W | 3500K |
|        |                           |         |          | 16,542 lm | 165 lm/W | 4000K |
|        |                           |         |          | 16,082 lm | 161 lm/W | 5000K |
|        |                           | 150W    | 120-347V | 22,391 lm | 149 lm/W | 3500K |
|        |                           |         |          | 23,201 lm | 154 lm/W | 4000K |
|        |                           |         |          | 22,082 lm | 147 lm/W | 5000K |
|        |                           | 200W    | 120-347V | 30,400 lm | 152 lm/W | 3500K |
|        |                           |         |          | 30,869 lm | 154 lm/W | 4000K |
|        |                           |         |          | 28,792 lm | 144 lm/W | 5000K |

## DLC Information

| Order# | Model                     | Application   | DLC Standard | DLC Premium |
|--------|---------------------------|---|--------------|-------------|
| R34150 | RENO-SLEEK-LHB-DV-MW-MCCT | High-Bay Luminaires for Commercial and Industrial Buildings | -            | S-7RZ5D4    |

## Accessories



R39121  
RENO-SLEEK-LHB-WMK  
Surface mount bracket



R83010  
RENO-EM-EX15  
All-Weather Emergency LED Driver  
(100-347V AC, 50-60Hz, 15W)

| Order# | Model              | Description   |
|--------|--------------------|---|
| R39121 | RENO-SLEEK-LHB-WMK | Surface Mount Bracket   |
| R83010 | RENO-EM-EX15       | External Mount All-Weather Emergency Driver, 15W Output, ≥90 Minutes Operating Time |

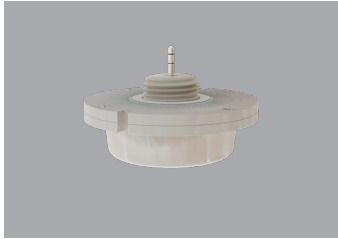




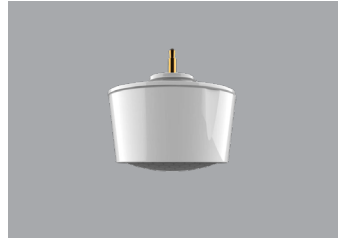
# TRITON Series | NSF Sleek Linear Highbay

ARCHITECTURAL LUMINAIRES BY RENO LIGHTING

## Accessories - Standalone Sensor & Remotes



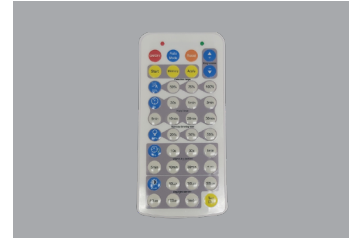
R71002  
RENO-SENSOR-MW-H  
Microwave Sensor



R74004  
RENO-SENSOR-PIR3.5-PH15M  
Long Detection Range PIR Sensor



R73002  
RENO-REMOTE-H  
Remote Control for Standalone Sensors (With Screen)



R73005  
RENO-REMOTE-H-ECO  
Remote Control for Standalone Sensors (Without Screen)

| Order# | Model                    | Description   |
|--------|--------------------------|---|
| R71002 | RENO-SENSOR-MW-H         | Bi-level Microwave Sensor   |
| R74004 | RENO-SENSOR-PIR3.5-PH15M | Long Detection Range PIR Sensor   |
| R73002 | RENO-REMOTE-H            | Remote Control for Standalone Sensors (With Screen)<br>Note: Only 1 needed per project    |
| R73005 | RENO-REMOTE-H-ECO        | Remote Control for Standalone Sensors (Without Screen)<br>Note: Only 1 needed per project |

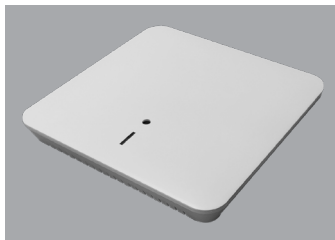
## Accessories - Reno Smart NLC Sensors



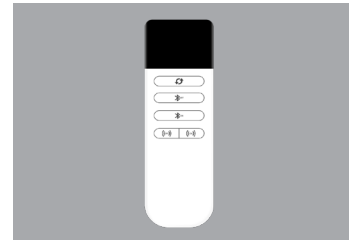
R75001  
RENO-RS-JK-BPDN-12V  
Bluetooth 3.5mm Jack PIR Sensor



R75002  
RENO-RS-JK-BMWM-12V  
Bluetooth 3.5mm Jack Microwave Sensor



R75201  
RENO-RS-GW-BCNW  
Bluetooth Ceiling mounted gateway



R75301  
RENO-RS-GW-BCNW  
Bluetooth Reset remote controller

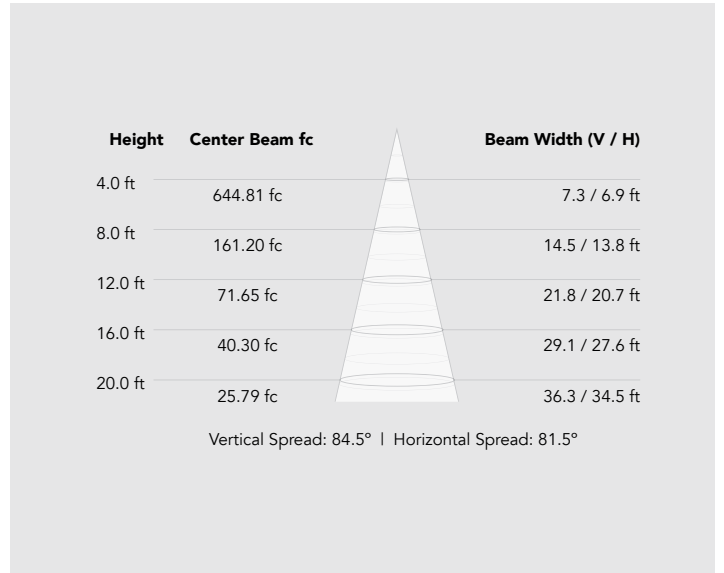
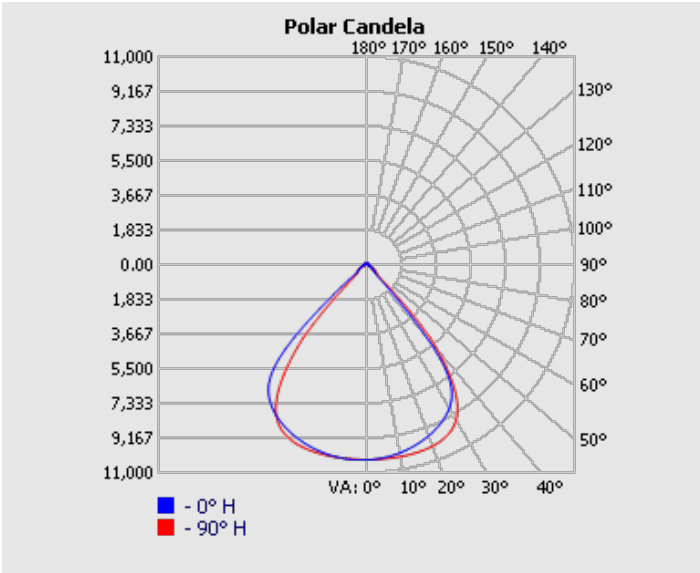
| Order# | Model               | Description   |
|--------|---------------------|---|
| R75001 | RENO-RS-JK-BPDN-12V | Bluetooth 3.5mm Jack PIR Sensor for RENO Smart NLC System       |
| R75002 | RENO-RS-JK-BMWM-12V | Bluetooth 3.5mm Jack Microwave Sensor for RENO Smart NLC System |
| R75201 | RENO-RS-GW-BCNW     | Bluetooth Ceiling mounted gateway for RENO Smart NLC System     |
| R75301 | RENO-RS-RC-BNNN     | Bluetooth Reset remote controller (5-keys)                      |

**\*\*All Reno Smart Sensors are programmed/commissioned using our Reno Smart App**

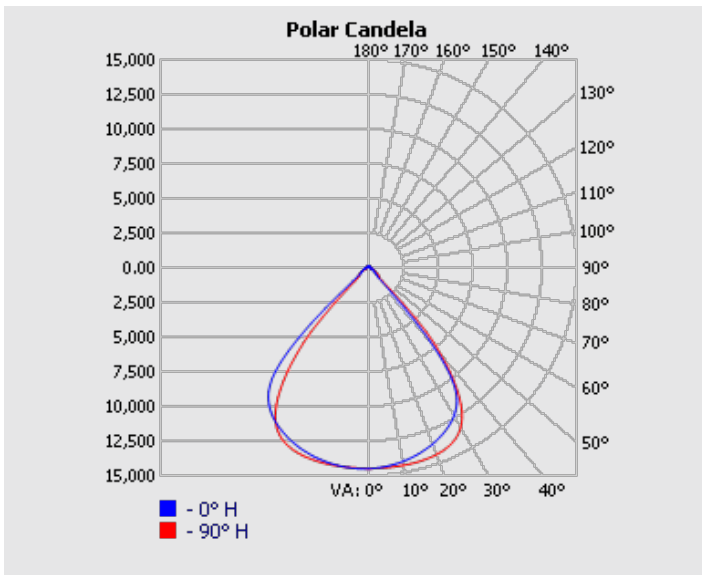




Photometrics - 100W/4000K



Photometrics - 150W/4000K

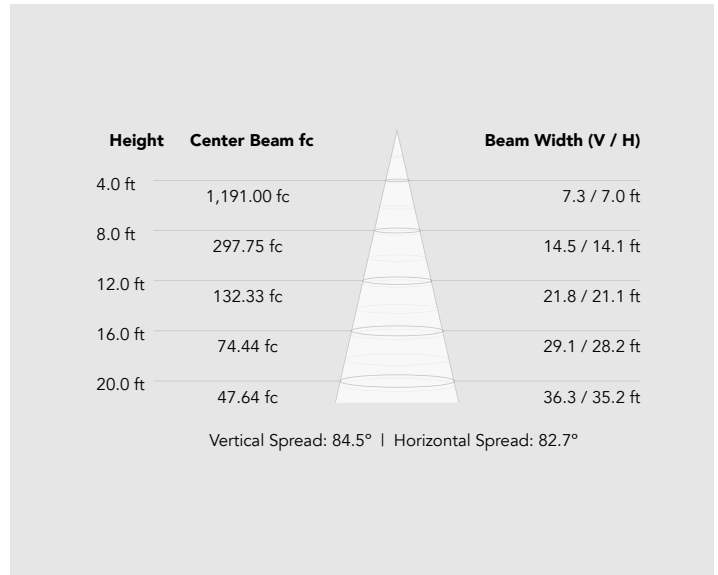
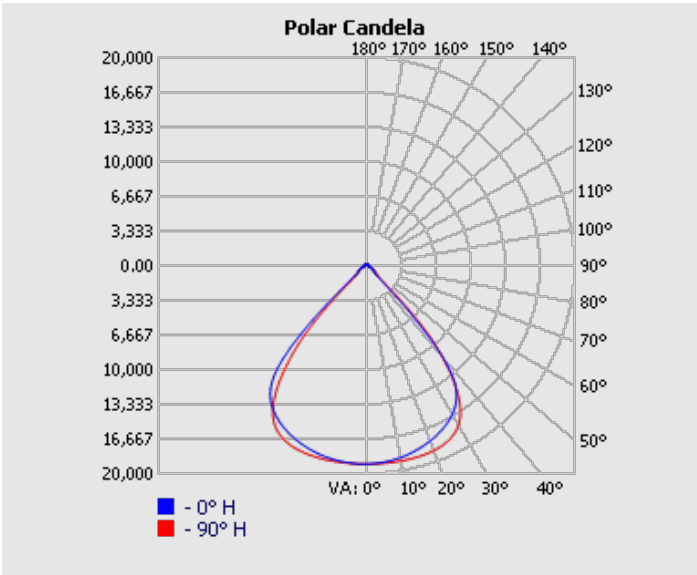




# TRITON Series | NSF Sleek Linear Highbay

ARCHITECTURAL LUMINAIRES BY RENO LIGHTING

## Photometrics - 200W/4000K



## Dimensions

